

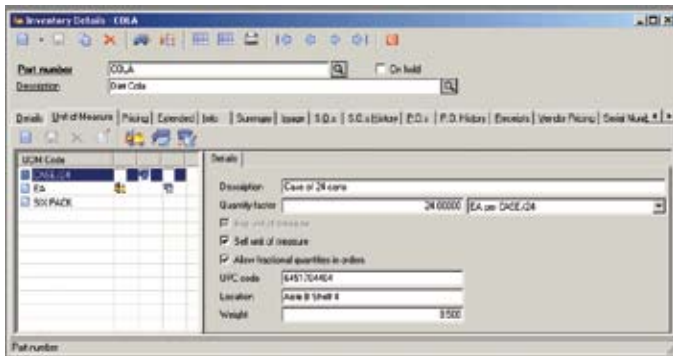


What's New in Version 7.2

Sage BusinessVision version 7.2 offers even more benefits that help make internal business processes operate faster and easier, so you can spend less time focusing on daily tasks and more time on planning for future business success. It is also runs on the new Microsoft Windows® Vista™ operating system. Take a look at how the new functionality can improve your business processes:

Multiple Units of Measure

Open up nearly limitless possibilities with your inventory stock. New Unit of Measure conversion expands the functionality of the inventory module, allowing you to define a buy, sell, and stock units. You can also convert using fractional quantities and set up pricing based on conversion factors or set amounts.

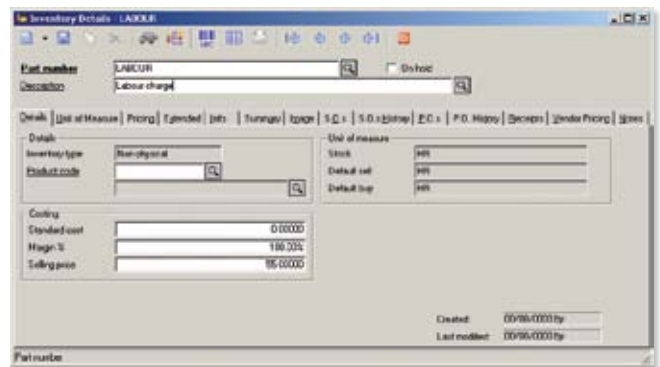


New Unit of Measure tab in the Inventory Details screen allows you to define how you buy and sell inventory.

Inventory is often purchased in bulk, such as cases, bags, and gallons, and then sold to customers in individual units. The new Multiple Units of Measure functionality removes the hassle of manually converting units—and the risk of costly errors—by automatically calculating the conversion from one unit to another in the appropriate forms, including invoices, purchase orders, and inventory reports. BusinessVision 7.2 allows you to configure multiple units of measure for each of your products. Inventory can be purchased and sold in different measures while continuing to maintain an accurate count of how many units you have in stock. Inventory details can be viewed at any time in your sales, purchase, or stock measure. Purchase cost and sales prices can also be configured differently for each measure. This tighter control and improved visibility translates into more accurate inventory and a huge time and money saver.

Non-physical or service items

No more typing all that information for items that you do not track in Inventory. How many times have you had to type in details for supplies, services, labor, overhead, or other repetitive charges? Now you can set up non-physical inventory items for items that you purchase or sell but whose quantity is not tracked. Once the item is set up in Inventory, you can use it throughout BusinessVision. This new feature enables fast and accurate data entry, eliminating costly mistakes and allowing you to get your work done faster!



New Inventory Type of Non-physical allows you to setup inventory items that are not quantity tracked.

Multiple UPCs

BusinessVision 7.2 now has the ability to track multiple Universal Product Codes per item. The UPC is a 12-digit numeric code that identifies consumer retail packages. A product that comes in the back door in volume (5-pound tub, 40-pound block) and is sold out the front in a smaller, consumer-sized package needs a different UPC. So, instead of one item in the store having one UPC, a single item could have multiple UPCs. Accurate product identification is important because it impacts the bottom line, helps control inventory, and is important to capturing and communicating data from supplier to shipper to category manager and back again.

Turn Auto-Complete On/Off

We introduced the Auto-Complete feature in version 7.1, as a way for users to find information more quickly. Are you a speed typist, or do you simply get annoyed by the auto-complete feature? Well, have no fear: You now have the control to turn the auto-complete feature off. No need for office arm-wrestling competitions, as this new option can be set by user. Now all users can decide if this feature helps them find information more quickly or not.

Order Required Dates

Enjoy greater flexibility in tracking and reporting on customers orders, which now feature more dates in Order Entry and Purchase Orders modules with an order date, required date, and ship date.

Update Vendor Specific Pricing from Purchase Orders

Eliminate manual updating of vendor pricing information with the ability to revise vendor pricing based on the last price received from that vendor in Purchase Orders.

Supervisor Override for Credit Holds

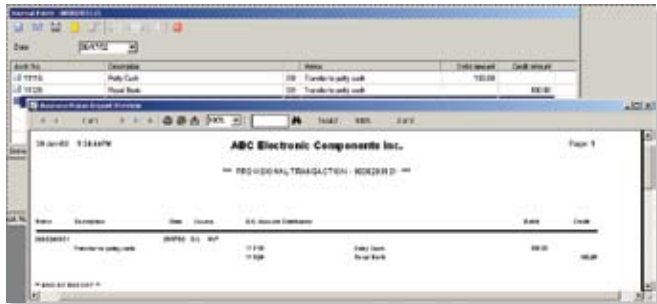
Now, managers can quickly approve orders from the user screen with just a simple log-on for employees without user rights and who need manager approval to invoice customers over their credit limit.

BusinessVision Desktop Customization

Take control of your Desktop! Now you have the ability to customize the BusinessVision Desktop for your unique user logon. You can set the background color or even select a custom image. More than just cosmetic, it will also help you reduce the opportunity for error when it comes to processing data for two or more companies open at the same time.

Print Option for Journal Entries

Reduce the opportunity for error when entering a large journal entry with the ability to print out a provisional (pre-posted) transaction journal before completing the post.



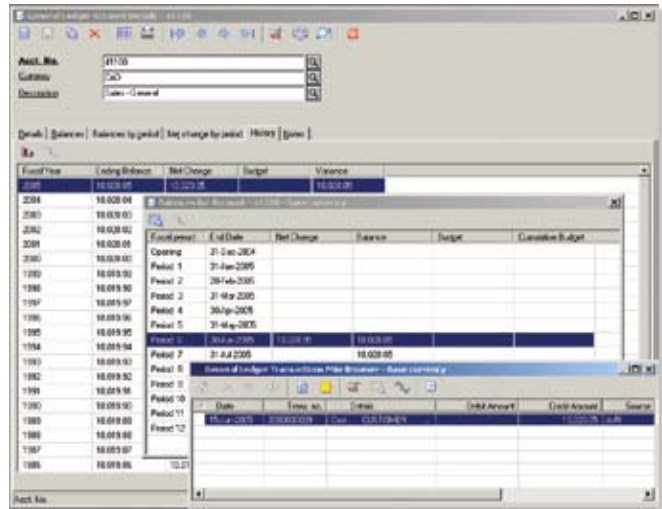
Print provisional transactions directly from Journal Entry

E-mail Your Purchase Orders

Increase your efficiency with the ability to e-mail purchase orders to vendors the same as you can for invoices to your customers.

Unlimited General Ledger History

Gaining quick and accurate insight into your business is critical to maintaining your competitive edge. Now you can easily access multiple years of historical data from one place. Enhanced General Ledger history lookup now gives you access to 99 years of General Ledger history in seconds right from the General Ledger inquiry screen. More history means more effective data analysis.



Gain better insight into your business by quickly viewing General Ledger History.

General Ledger Import—Chart and Transactions

Quickly import a new chart of accounts for a new company or import transaction information from outside sources, such as payroll, accounting adjustments, or other companies, with just a few simple clicks of the mouse.

Fixed Asset Accounting Integration

With version 7.2, users can now easily move fixed asset management data from the Sage FAS 50 Asset Accounting system (version 2008.1) into their Sage BusinessVision 50 Accounting General Ledger, giving consistency to the information entered and reducing the risk of data errors caused by manual entry.

Sage FAS 50 Asset Accounting gives a thorough overview of a company's fixed assets at every stage, and is one of the easiest to use, most affordable solutions of its kind in the industry.



End-to-end solutions. Expert advice. Ongoing support. That's Sage 360.

Sage Software supports the needs, challenges, and dreams of 2.8 million small and mid-sized business customers in North America through easy-to-use, scalable and customizable software and services. Sage Software is a subsidiary of The Sage Group plc, a leading international supplier of business management software and services formed in 1981 and listed on the London Stock Exchange since 1989.



©2008 Sage Software Canada, Ltd. All rights reserved. Sage Software, Sage Software logos, and the Sage Software product and service names mentioned herein are registered trademarks or trademarks of Sage Software Canada, Ltd., or its affiliated entities. All other trademarks are the property of their respective owners. Windows Vista and Windows logo are trademarks or registered trademarks of Microsoft Corporation in the United States and/or other countries.